

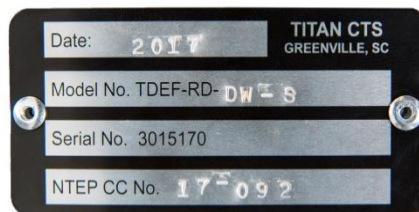


TITAN RETAIL CUBE

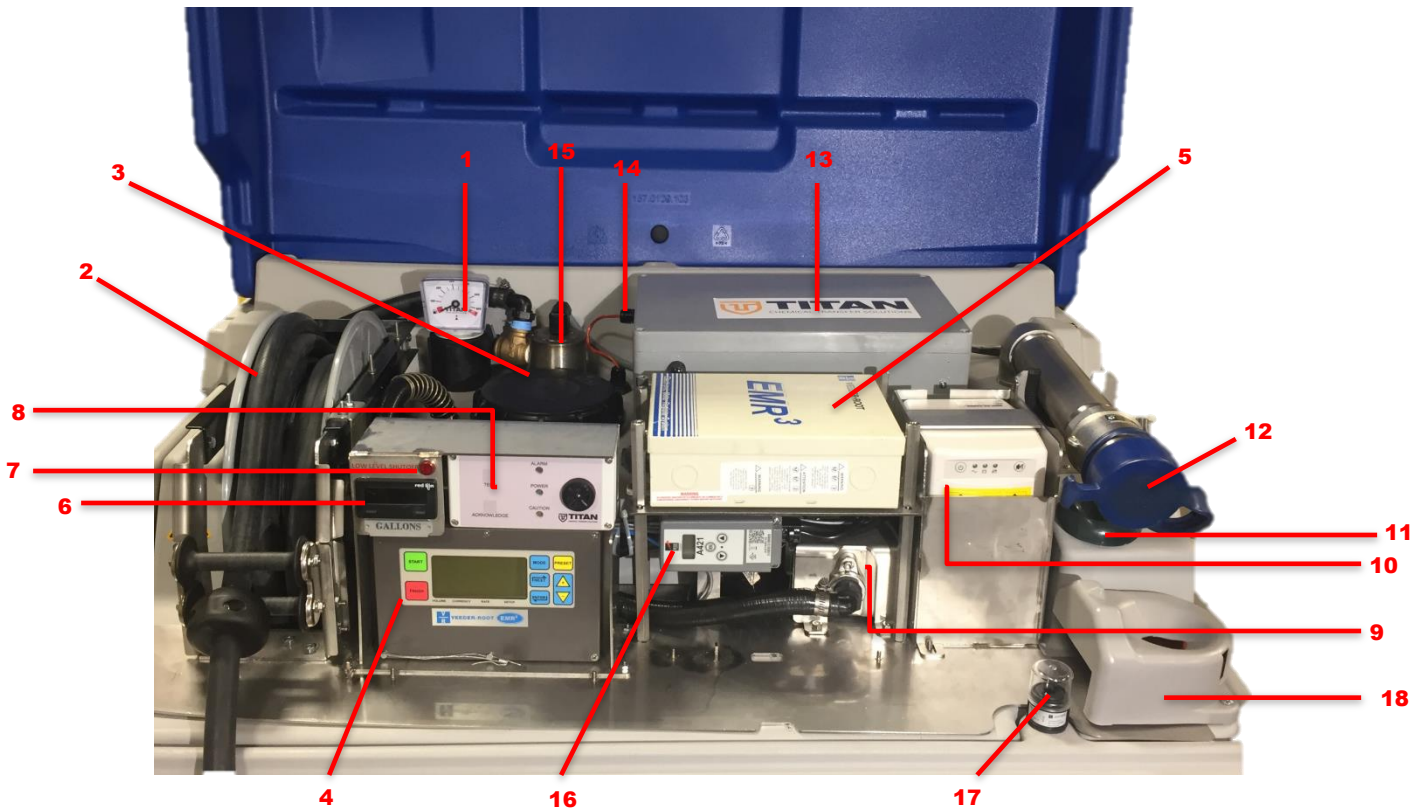


Features & Benefits

- NTEP Certificate of Conformance Number 17-092. Meets Requirements for Retail Dispense of DEF
- For Use with Certified and Compatible Card Readers, Console Controllers, Point-Of-Sale (POS), and Fuel Management Systems
- Robust, Double-Walled Tank: 400 or 660 Gallons
- Anti-Access Cover Secures All Electronic and Metrological Components for Unattended Applications
- Retail-Ready Submersible Pump
- 2" Dry-Break Fill Port
- 400W Heater, Optional Probe Heater for Extreme Temperatures
- Audible Overfill Alarm, Low-level Shut Off, Liquid Level Gauge. Remote Tank Monitoring Options Available
- Uninterruptible Power Supply
- Hose Reel and Auto Nozzle with Integrated Holster
- Fully Assembled, Pre-Wired and Calibrated
- Dimensions (WxDxH): 396g = 47x45 x71; 660g = 47x71x71



NTEP CERTIFICATE 17-092
WEIGHTS & MEASURES



Component List:

- | | |
|--|--|
| <ul style="list-style-type: none"> 1. Liquid Level Gauge 2. Hose Reel 3. 6" Threaded Access Cap 4. EMR3 Register Display Head 5. EMR3 IB Box 6. Secondary Display (Total Gallons) 7. Low-Level Shutoff Indicator 8. Audible Overfill Alarm 9. Meter 10. Uninterruptible Power Supply 11. Ventilation Valve 12. Fill Port (w/cover) 13. Electrical Box | <ul style="list-style-type: none"> 14. Pump Power Cord 15. Indirect Immersion Heater (Optional) 16. Indirect Immersion Heater Control (Optional) 17. Interstitial Alarm Sensor 18. Nozzle Holster |
|--|--|

Not Visible:

- 1. Deck Heater (Behind Audible Overfill Alarm)
- 2. Flow Control Valve Assembly (Underneath Electrical Box)



NTEP CERTIFICATE 17-092
WEIGHTS & MEASURES

